

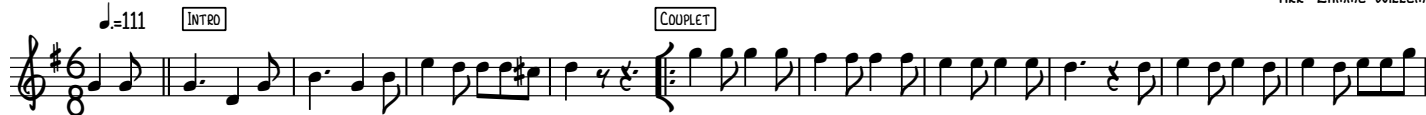
FLUIT

"DAS PAS BOUWE"

TULLEPETAONS CARNAVALSLIED 1986

TEKST+MUZIEK: WIL ROMMERS
ARR: LAMME WILLEM

♩=111 INTRO COUPLÉ



Musical notation for the first line of the score, starting with an 8-measure introduction and a 12-measure couplet.

12



Musical notation for the second line of the score, continuing the couplet.

22 *trm* *trm* REFRAIN



Musical notation for the third line of the score, including a refrain section with trills.

33



Musical notation for the fourth line of the score.

43 TO CODA 1.2. 3. D.S. AL CODA



Musical notation for the fifth line of the score, including first and second endings and a double bar line.



Musical notation for the sixth line of the score, featuring a key signature change to C major.

KLARINET

"DAS PAS BOUWE"

TULLEPETAONS CARNAVALSLIED 1986

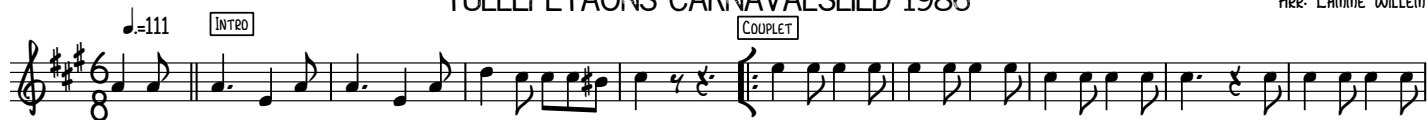
TEKST+MUZIEK: WIL ROMMERS

ARR: LAMME WILLEM

♩=111

INTRO

COUPLET



11

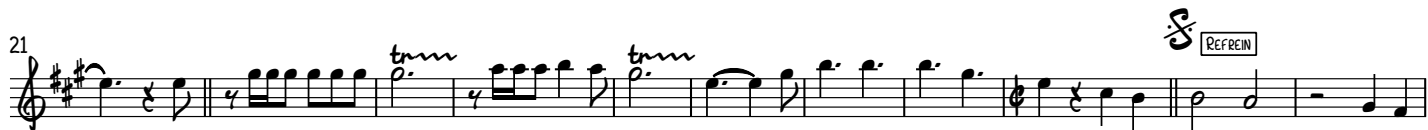


21

trm

trm

REFREIN



32



42

TO CODA

1.2.

3.

D.S. AL CODA



ALT SAX

"DAS PAS BOUWE"

TULLEPETAONS CARNAVALSLIED 1986

TEKST+MUZIEK: WIL ROMMERS

ARR: LAMME WILLEM

♩=111 **INTRO** **COUPLÉ**



12



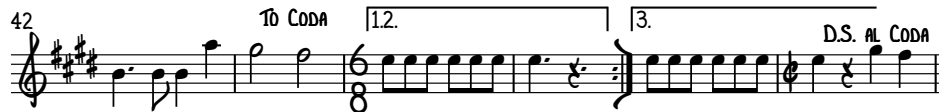
22 **REFRAIN**



32



42 **TO CODA** | 2. | 3. **D.S. AL CODA**



TÉNOR SAX

"DAS PAS BOUWE"

TULLEPETAONS CARNAVALSLIED 1986

TÉKST+MUZIEK: WIL ROMMERS
ARR: LAMME WILLEM

♩=111

INTRO

COUPLÉ

Musical notation for the Intro and Couplet sections. The Intro is marked with a tempo of 111 and a box labeled 'INTRO'. The Couplet is marked with a box labeled 'COUPLÉ'. The music is in 6/8 time and D major.

12

Musical notation for the continuation of the Couplet section, starting at measure 12. The music is in 6/8 time and D major.

22

REFRAIN

Musical notation for the Refrain section, starting at measure 22. The music is in 4/4 time and D major. A treble clef with a sharp sign is positioned above the staff.

33

Musical notation for the continuation of the Refrain section, starting at measure 33. The music is in 4/4 time and D major.

43

TO CODA

1.2.

3.

D.S. AL CODA

Musical notation for the end of the piece, starting at measure 43. It includes a 'TO CODA' instruction, first and second endings (1.2. and 3.), and a 'D.S. AL CODA' instruction. The music is in 6/8 time and D major.

Musical notation for the Coda section. The music is in 6/8 time and D major.

TROMPET (SPIJKERS)

"DAS PAS BOUWE"

TULLEPETAONS CARNAVALSLIED 1986

TEKST+MUZIEK: WIL ROMMERS

ARR: LAMME WILLEM

♩ = 111

INTRO

COUPLÉ

11

21

30

REFRAIN

40

To CODA

1. 2.

46

3.

D.S. AL CODA

TROMPET 1

"DAS PAS BOUWE"

TULLEPETAONS CARNAVALSLIED 1986

TEKST+MUZIEK: WIL ROMMERS
ARR: LAMME WILLEM

♩ = 111

INTRO

COUPLÉ



11



20



30

REFRAIN



40

TO CODA

12.



46

3.

D.S. AL CODA



TROMPET 2

"DAS PAS BOUWE"

TULLEPETAONS CARNAVALSLIED 1986

TEKST+MUZIEK: WIL ROMMERS
ARR: LAMME WILLEM

♩ = 111

INTRO

COUPLÉ



11



20



29

REFRAIN



39

To CODA

1. 2.

3.

D.S. AL CODA



48



TROMBONE 1

"DAS PAS BOUWE"

TULLEPETAONS CARNAVALSLIED 1986

TEKST+MUZIEK: WIL ROMMERS
ARR: LAMME WILLEM

♩=111 INTRO COUPLÉ

12

22 REFRAIN

32

43 TO CODA 12. 3. D.S. AL CODA

TROMBONE 2

"DAS PAS BOUWE"

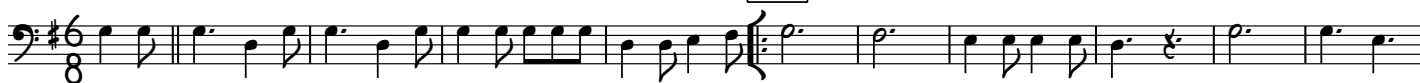
TULLEPETAONS CARNAVALSLIED 1986

TEKST+MUZIEK: WIL ROMMERS
ARR: LAMME WILLEM

♩=111

INTRO

COULET



12



22



REFRAIN



32



43

TO CODA

12.

3.

D.S. AL CODA



BARITONE

"DAS PAS BOUWE"

TULLEPETAONS CARNAVALSLIED 1986

TEKST+MUZIEK: WIL ROMMERS
ARR: LAMME WILLEM

♩=111

INTRO

COUPLÉ

12

22

REFRAIN

33

43

TO CODA

1.2.

3.

D.S. AL CODA

BAS IN B♭

"DAS PAS BOUWE"

TULLEPETAONS CARNAVALSLIED 1986

TEKST+MUZIEK: WIL ROMMERS
ARR: LAMME WILLEM

♩=111 INTRO COUPLÉ

11

22

30 REFRAIN

40 TO CODA 12.

46 3. D.S. AL CODA

BAS IN Eb

"DAS PAS BOUWE"

TULLEPETAONS CARNAVALSLIED 1986

TEKST+MUZIEK: WIL ROMMERS
ARR: LAMME WILLEM

♩=111

INTRO

COUPLÉ

11

4

22

30

REFRAIN

40

TO CODA

12.

46

3.

D.S. AL CODA

GITAAR

"DAS PAS BOUWE"

TULLEPETAONS CARNAVALSLIED 1986

TEKST+MUZIEK: WIL ROMMERS
ARR: LAMME WILLEM

♩ = 111 G **INTRO** **COUPLÉ** G Gmaj7 G⁶ G G⁶ G⁰

12 D7 D(ADD4) D7 A7 D7

22 D7 Eb7 D7 4

30 **REFRAIN** C D7 G 4

40 C D7 TO CODA 1.2. G 3. G D.S. AL CODA

48 G ^

BAS IN C

"DAS PAS BOUWE"

TULLEPETAONS CARNAVALSLIED 1986

TEKST+MUZIEK: WIL ROMMERS
ARR: LAMME WILLEM

♩=111 [INTRO]

COUPLÉT

11

22

30 [REFRAIN]

39 TO CODA

12. 3. D.S. AL CODA

48

Deums

"DAS PAS BOUWE"

TULLEPETAONS CARNAVALSLIED 1986

TEKST+MUZIEK: WIL ROMMERS
ARR: LAMME WILLEM

♩=111

INTRO

COUPELLET

8

22

30

REFREIN

39

TO CODA

12.

45

3.

D.S. AL CODA