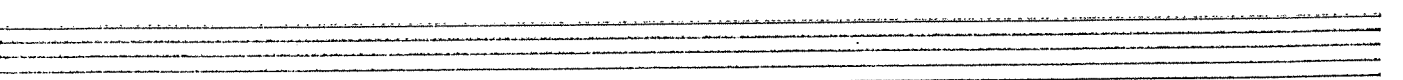
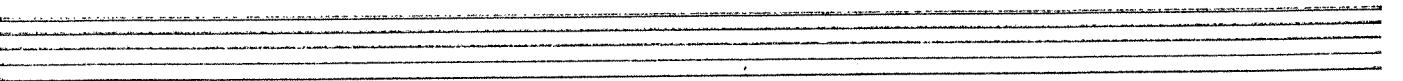
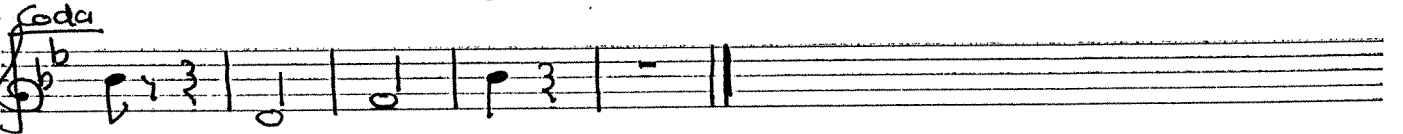
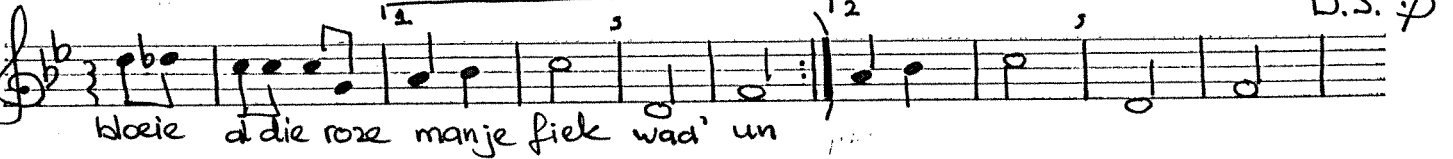
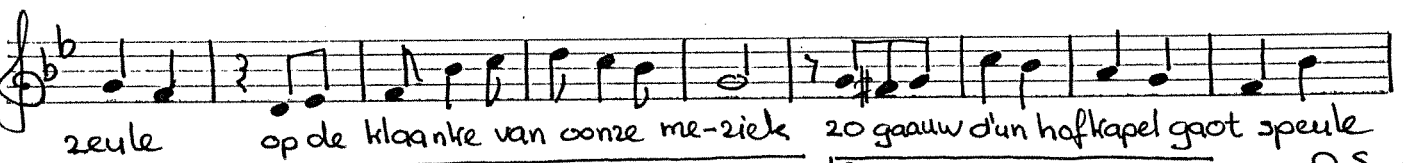
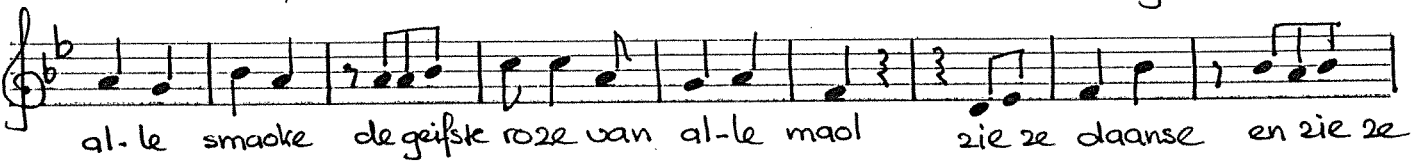
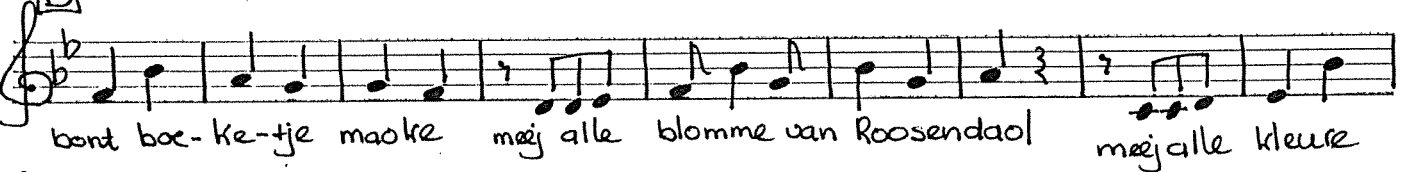
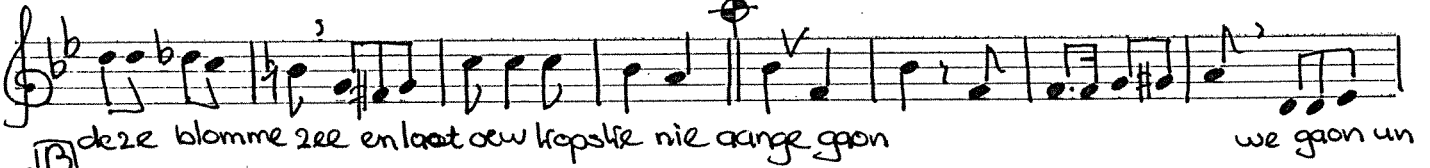
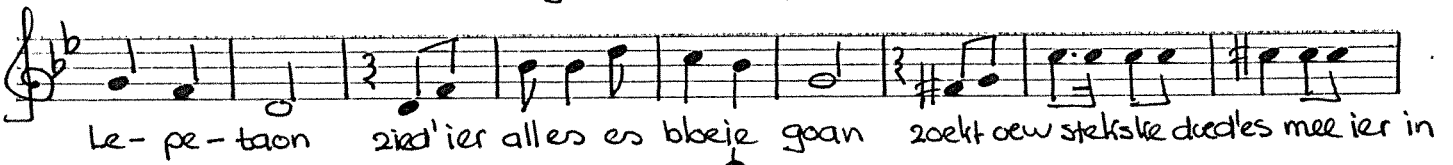
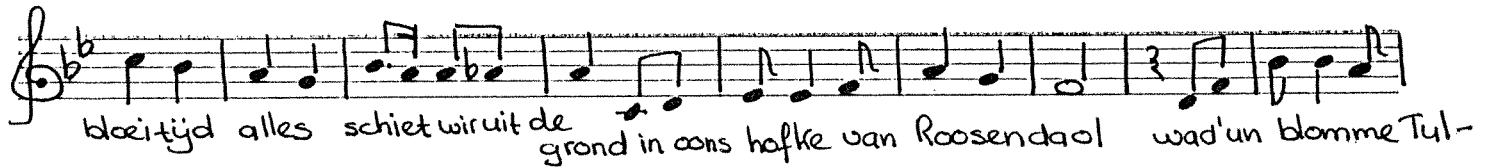
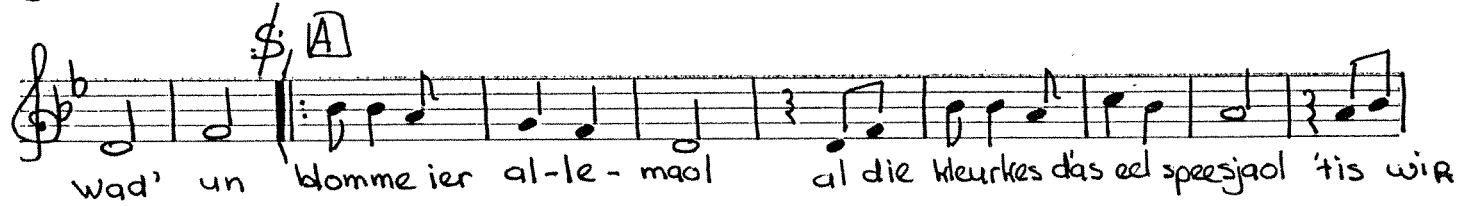


"Wad'un Blomme"

C melodie



"Wad' um Blomme"

klarinet 1+2

Handwritten musical notation for the first staff. It begins with a treble clef, a key signature of one sharp (F#), and a 2/4 time signature. The melody consists of eighth and sixteenth notes, with some triplets and a final triplet of eighth notes.

Handwritten musical notation for the second staff. It starts with a section marker 'A' in a box. The notation includes a repeat sign and various rhythmic patterns, including triplets and sixteenth-note runs.

Handwritten musical notation for the third staff, continuing the melodic line with eighth and sixteenth notes and some triplet markings.

Handwritten musical notation for the fourth staff, featuring more complex rhythmic patterns and sixteenth-note passages.

Handwritten musical notation for the fifth staff. It begins with a section marker 'B' in a box. The notation includes a repeat sign and various rhythmic patterns, including triplets and sixteenth-note runs.

Handwritten musical notation for the sixth staff, continuing the melodic line with eighth and sixteenth notes and some triplet markings.

Handwritten musical notation for the seventh staff, featuring more complex rhythmic patterns and sixteenth-note passages.

Handwritten musical notation for the eighth staff, continuing the melodic line with eighth and sixteenth notes and some triplet markings.

Handwritten musical notation for the ninth staff. It includes first and second endings, marked with circled numbers 1 and 2. The notation ends with a double bar line and the instruction 'D.S.' (Da Capo).

Handwritten musical notation for the tenth staff. It begins with a Coda section, marked with a double bar line and a circle. The notation includes a few final notes and rests.

Two empty musical staves at the bottom of the page, consisting of five lines each.

Wad 'un blomme

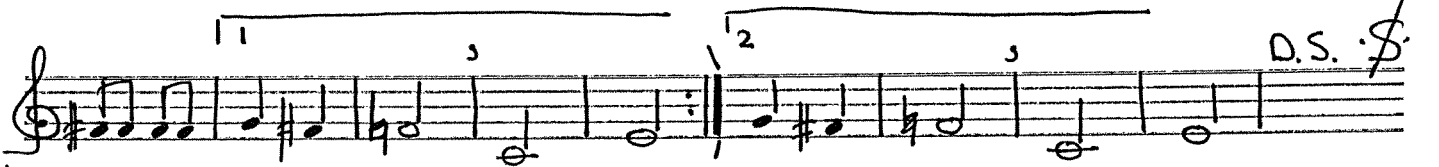
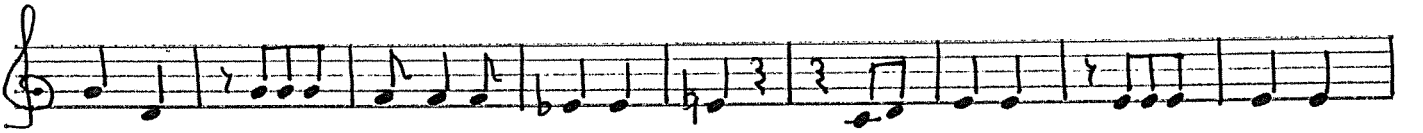
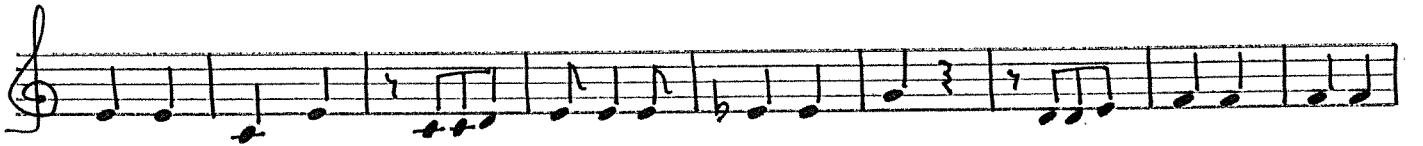
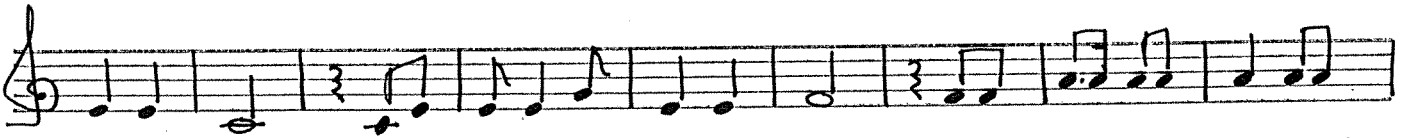
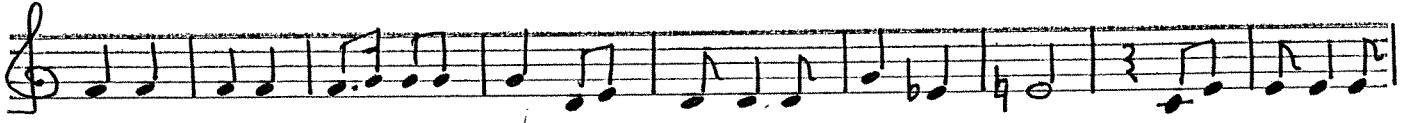
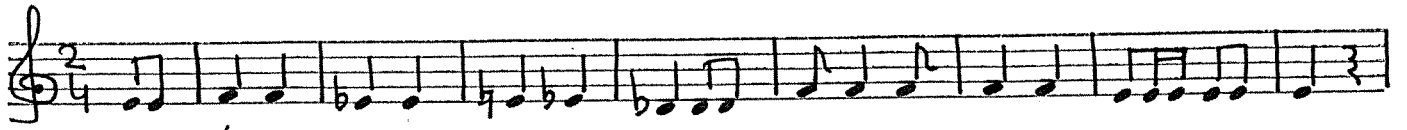
Carnavalslied 1993

Trompet 1

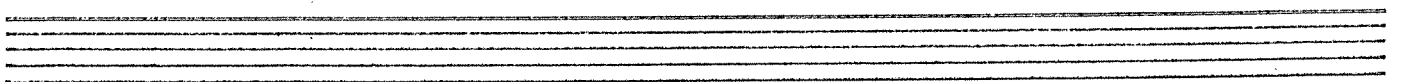
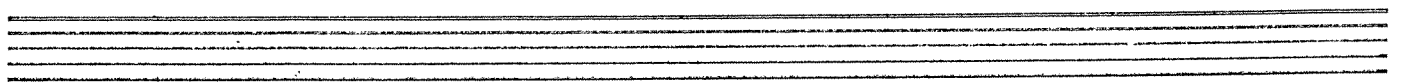
Couplet

"Wad' un Blomme"

Trompet 2



Coda

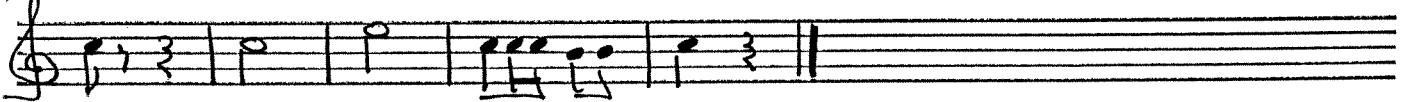


"Wad' un Blomme"

tenorsax
(bariton)

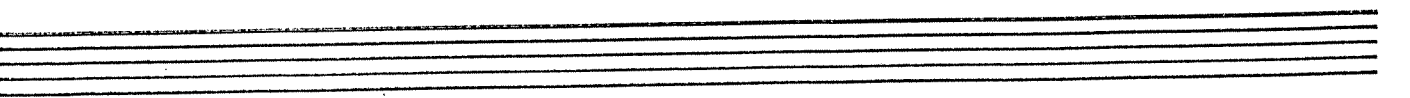
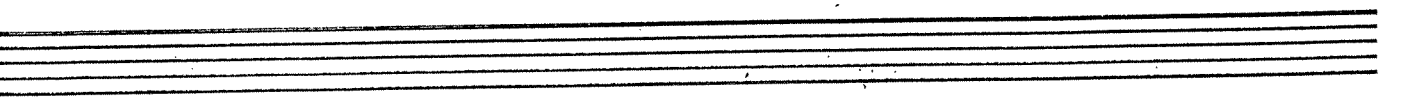
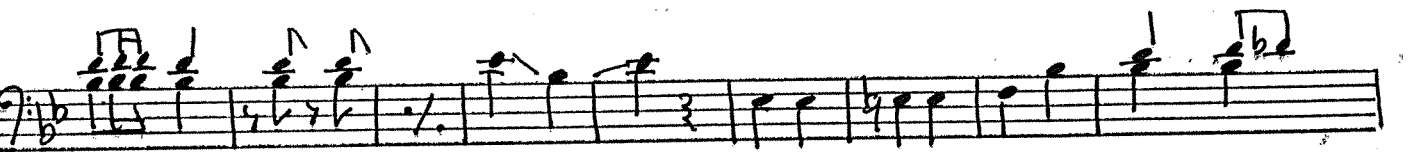
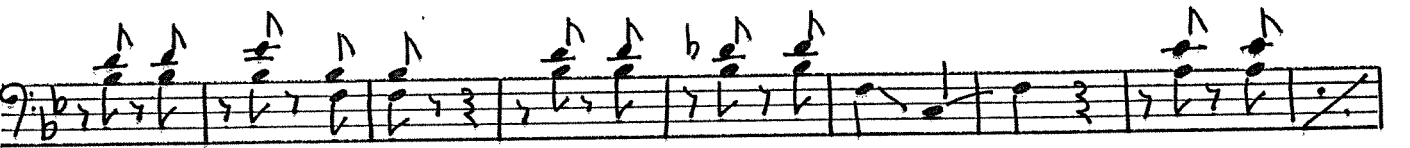
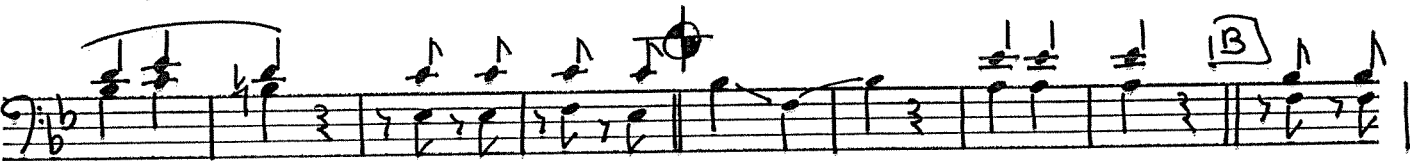


Coda



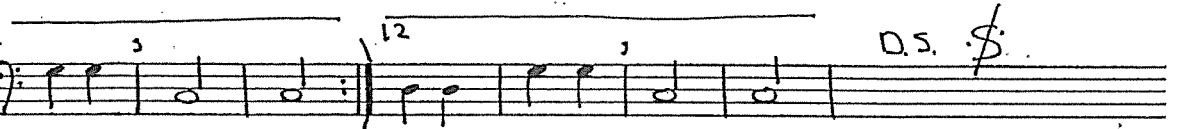
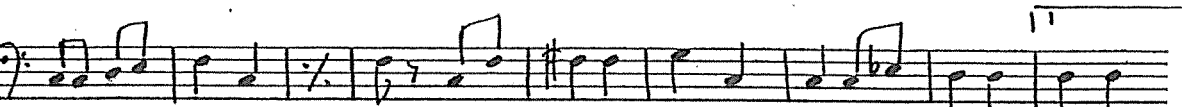
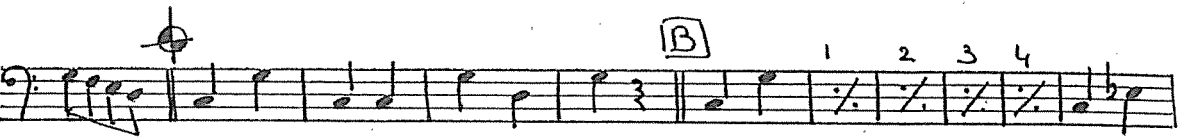
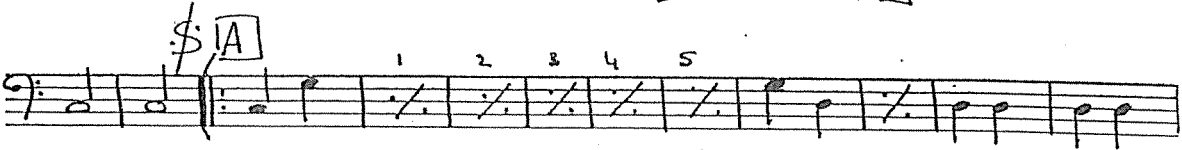
"Wad'un Blomme"

trombone 1+2



Wad' un Blomme

bes bas



Coda

